



Kindergarten

Skills 7 | Reader

Seth

Kindergarten

Skills 7

Seth

Reader

© 2026 Amplify Education, Inc. and its licensors
www.amplify.com

© 2015 The Core Knowledge Foundation and its licensors
www.coreknowledge.org

ISBN 979-8-89404-011-0

This work is licensed under a Creative Commons
Attribution-NonCommercial-ShareAlike
4.0 International License.

You are free:
to Share—to copy, distribute, and transmit the work
to Remix—to adapt the work

Under the following conditions:

Attribution—You must attribute any adaptations of the work in the following manner:

This work is based on original works of Amplify Education, Inc. (amplify.com) and the Core Knowledge Foundation (coreknowledge.org) made available under a Creative Commons Attribution-NonCommercial-ShareAlike 4.0 International License.

<https://creativecommons.org/licenses/by-nc-sa/4.0/>

Noncommercial—You may not use this work for commercial purposes. Contact help@amplify.com for questions and permissions.

Share Alike—If you alter, transform, or build upon this work, you may distribute the resulting work only under the same or similar license to this one by including the attribution language above.

Trademarks and trade names are shown in this book strictly for illustrative and educational purposes and are the property of their respective owners. References herein should not be regarded as affecting the validity of said trademarks and trade names.

Printed in the USA
01 XXX 2024

Table of Contents

Seth

Skills 7 Reader

Seth	2
Seth’s Mom	8
Seth’s Dad	18
Sal’s Fish Shop	26
Lunch	32
Seth’s Finch	36
Pausing Point (Stories for Assessment and Enrichment)	
Lost Finch	40
Seth’s Sled	44
Meg’s Tots	48
Hash and Milk	54



Seth

This is Seth Smith.

Seth is ten.







Seth must get in bed at ten.

Seth can jump on his bed, but
not past ten.

Seth can stomp and romp
and stand on his hands, but
not past ten.







Seth's dad gets mad if
Seth is not in bed at ten.





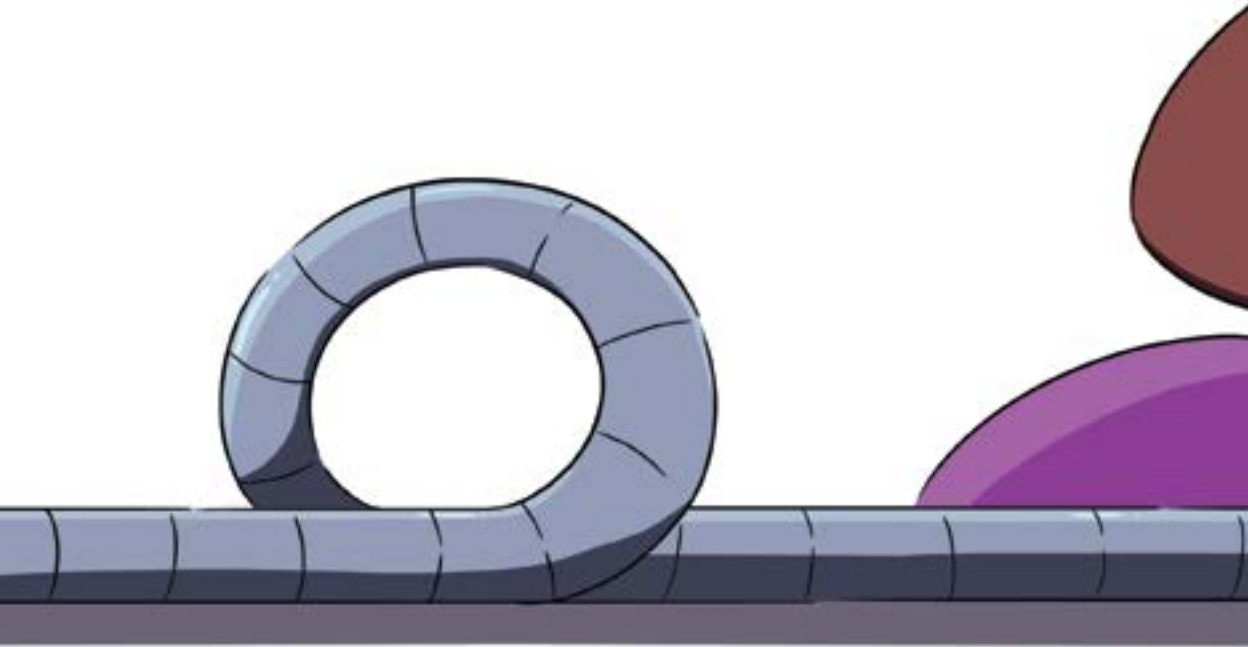
Seth's Mom

This is Pat.

Pat is Seth's mom.



Pat can fix **things**.





Pat can scrub, plan, and
think.





Pat is strong.

Pat can run fast.





Pat can sing songs.





Seth's Dad

This is Ted.

Ted is Seth's dad.



Ted brings his
lunch with him.

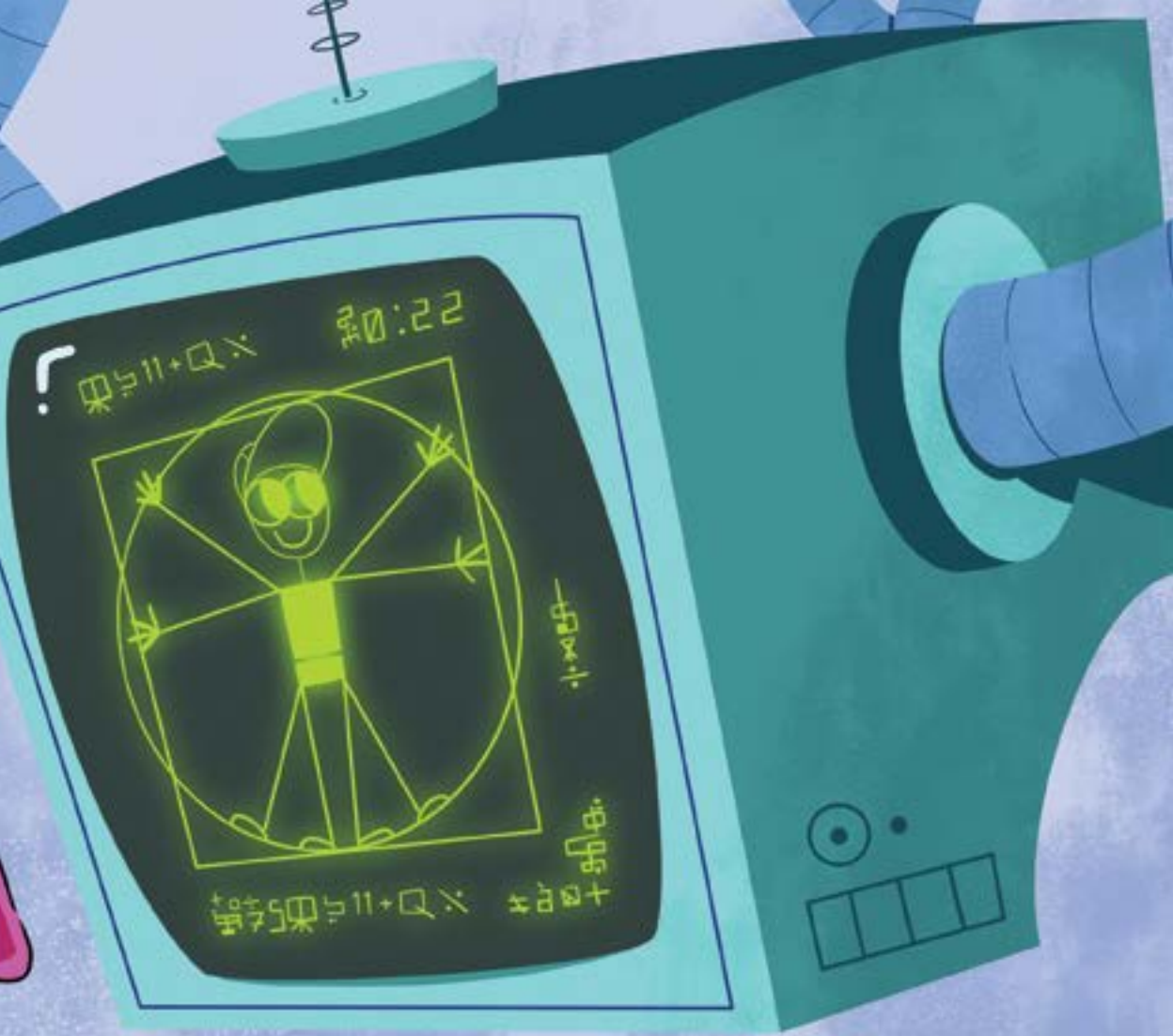




Ted **thinks** and plans.

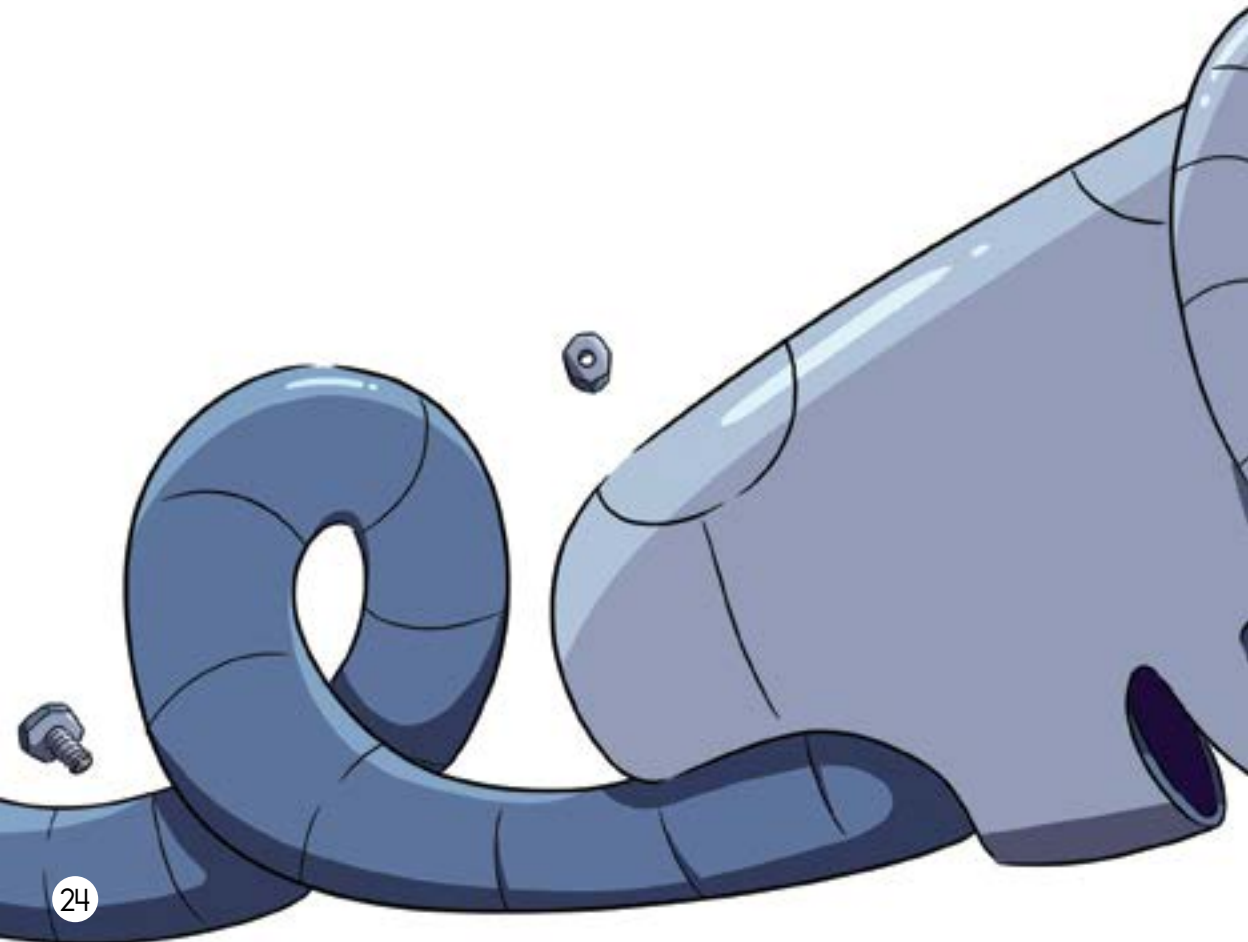
Ted is fast with **math**.

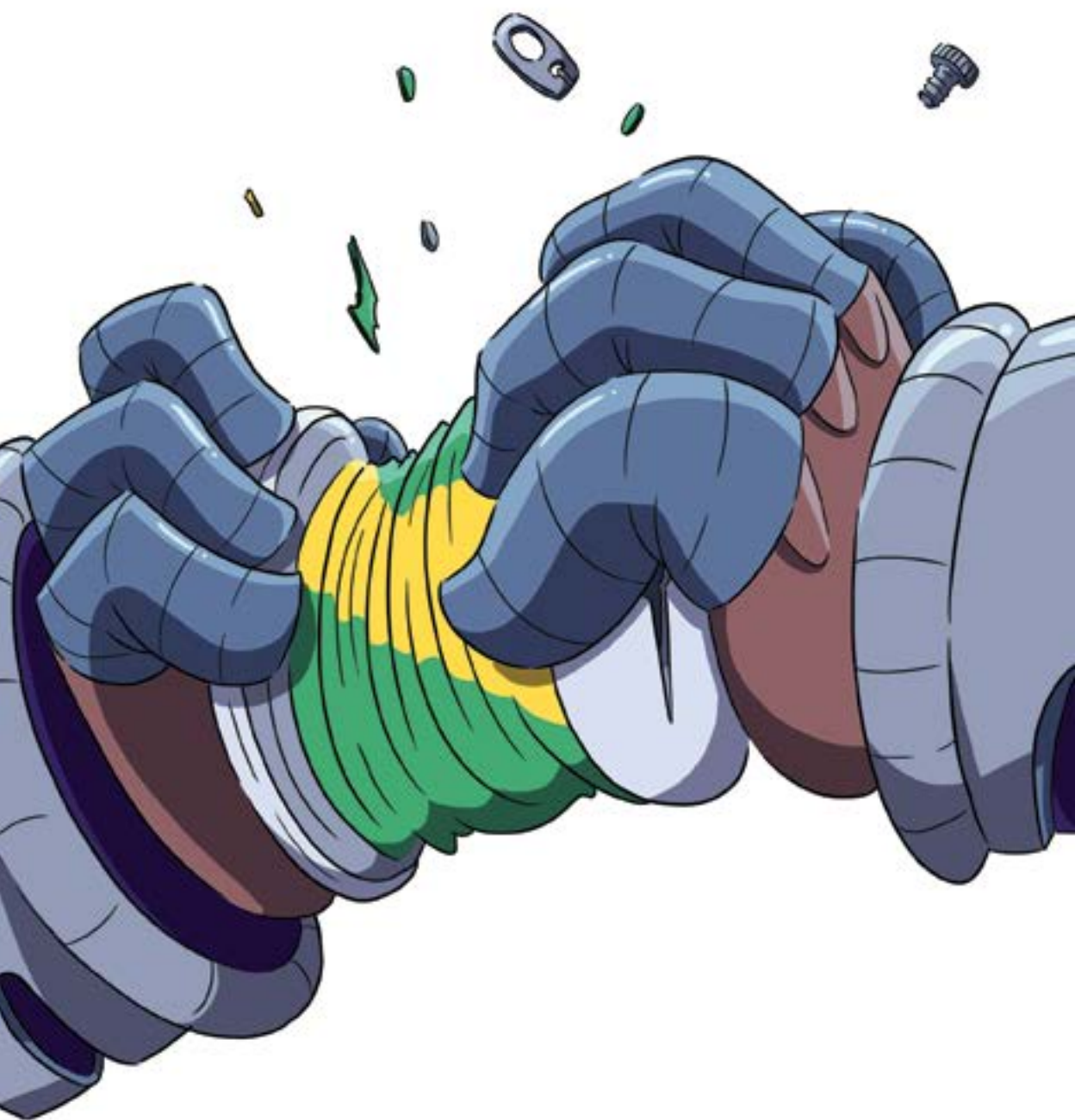




Ted is strong.

Ted can crush tin cans
with his hands.





Sal's Fish Shop

Pat and Seth went in Sal's
Fish Shop.







Sal had fresh fish.

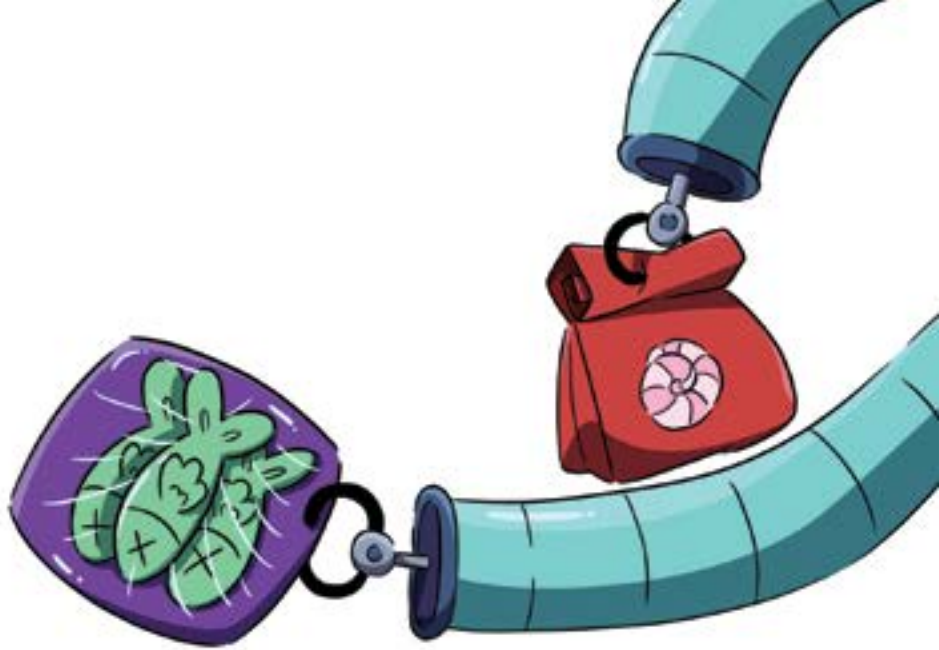
Sal had fresh shrimp.

Sal had crabs.

Sal had clams.

Sal had squid.





Pat got fish and shrimp.





Lunch

Seth had lunch with his
mom and dad.



Pat had **shrimp** and **chips**.



Ted had **shrimp**, **fish**, and
chips.



Seth had ham and **chips**.

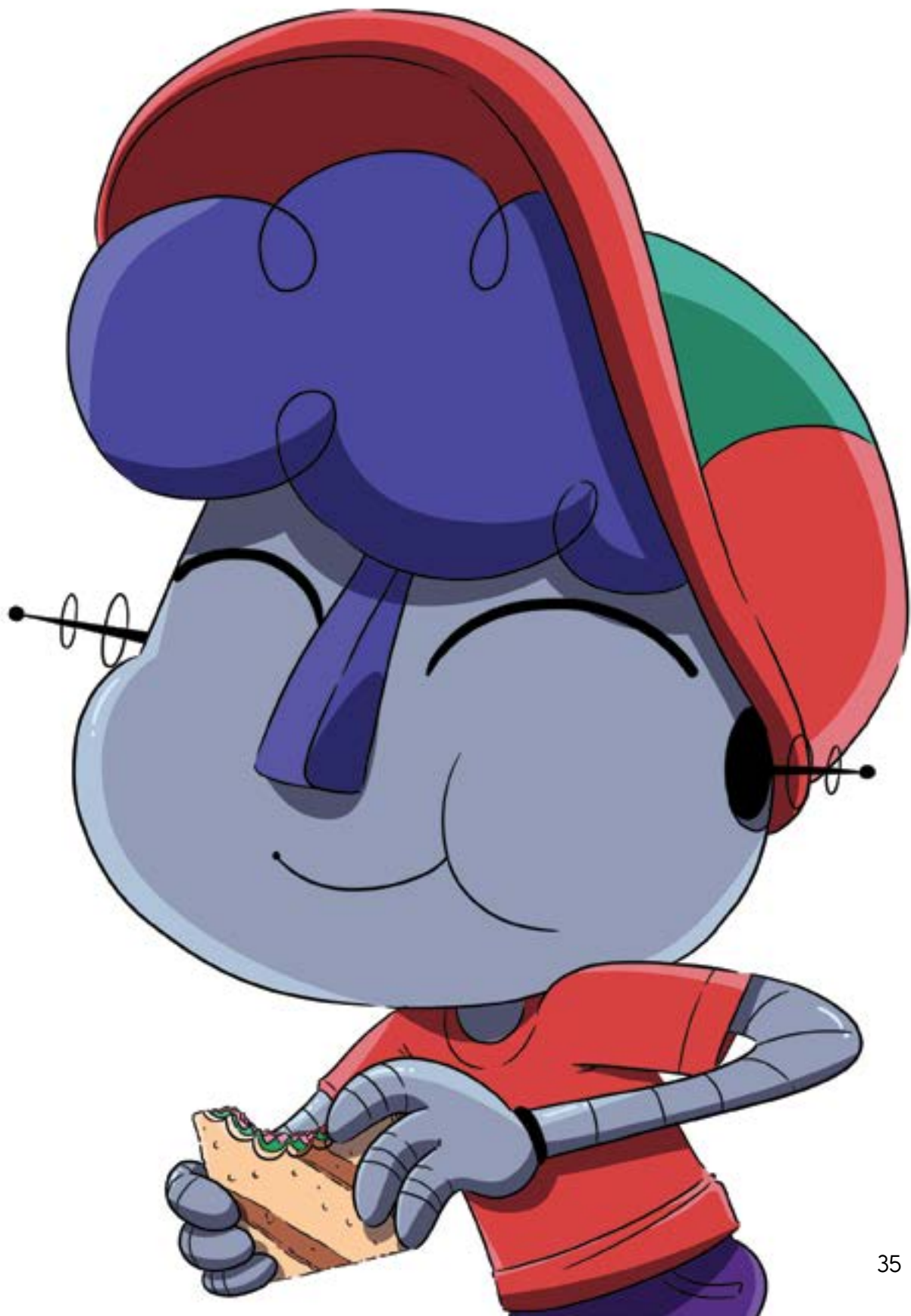




Munch, munch.

Crunch, crunch.

Yum, yum.



Seth's Finch

That's Seth's pet finch,
Chip.

Chip can flap his wings.

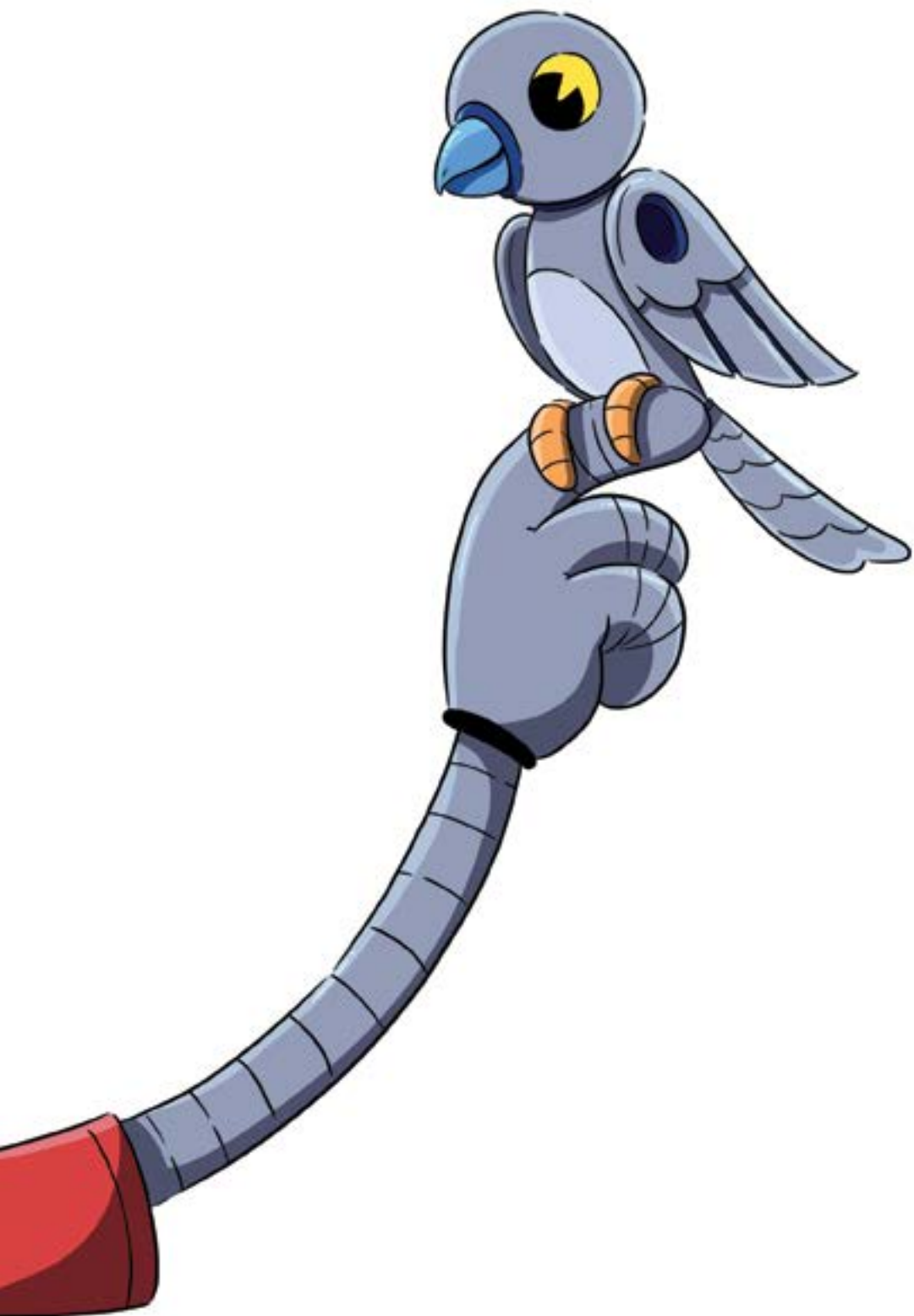
Chip can munch on ants
and bugs.

Chip can sing.



Chip can land on
Seth's hand.
That finch is fun!





Lost Finch

Seth's pet finch, Chip, is
lost.

Seth can't spot him.

Pat can't spot him.

Ted can't spot him.



Chip is not on Seth's bed.
Chip is not on Seth's desk.



Then, at last, Pat spots Chip.
Chip hid in Pat's hat and slept.





Seth's Sled

Seth's sled went fast.

Seth held on.

Seth hit bumps but did
not stop.

Seth hit slush but did not
stop.



Then Seth's sled hit mud.

Splash!

Seth got mud on his sled.

Seth got mud on his
pants.

Seth got mud on his hat.



Meg's Tots

This is Meg.

Meg is Pat's best pal.





Pat has 1 lad—Seth.

Meg has 5 tots—Tom, Tim,
Max, Sam, and Wes.

Meg has **quints!**



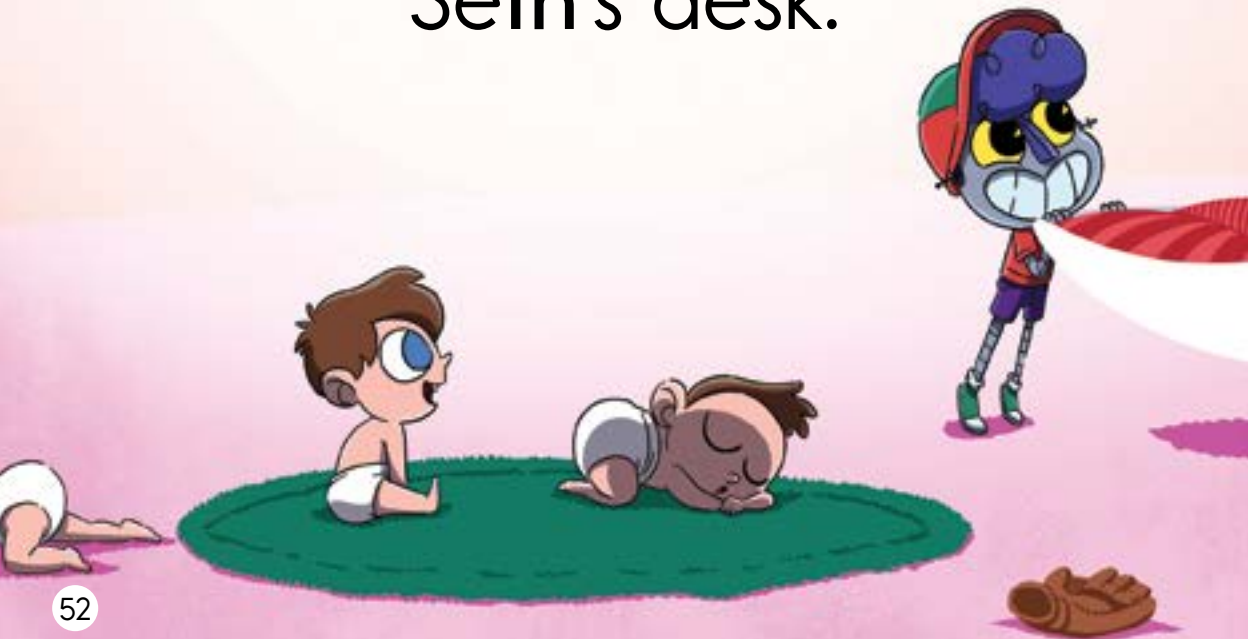
Pat and Ted help Meg.

Pat sets Tim and Tom on
Seth's rug.

Ted sets Sam on Seth's quilt.

Pat sets Max on Seth's bed.

Ted helps Wes stand up on
Seth's desk.





Hash and Milk

Pat and Ted had lunch
with Meg's tots.

Max got hash on his chin.

Wes got hash on his bib.

Tim's milk is on Tom.

Then Tom got milk on Tim.

Sam got milk on Pat and
Ted.

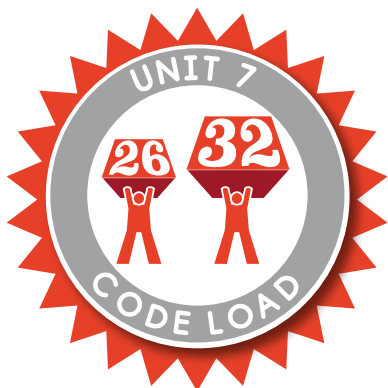


About this Book

This book has been created for use by students learning to read with the Program. Readability levels are suitable for early readers. The book has also been carefully leveled in terms of its “code load,” or the number of spellings used in the stories.

The English writing system is complex. It uses more than 200 spellings to stand for 40-odd sounds. Many sounds can be spelled several different ways, and many spellings can be pronounced several different ways. This book has been designed to make early reading experiences simpler and more productive by using a subset of the available spellings. It uses *only* spellings students have been taught to sound out as part of their phonics lessons, plus a handful of Tricky Words, which have also been deliberately introduced in the lessons. This means the stories will be 100% decodable if they are assigned at the proper time.

As the students move through the program, they learn new spellings and the “code load” in the decodable Readers increases gradually. The code load graphic on this page indicates the number of spellings students are expected to know in order to read the first story of the book and the number of spellings students are expected to know in order to read the final stories in the book. The columns on the opposite page list the specific spellings and Tricky Words students are expected to recognize at the beginning of this Reader. The bullets at the bottom of the opposite page identify spellings, Tricky Words, and other topics that are introduced gradually in the unit this Reader accompanies.



Code Knowledge assumed at the beginning of this Reader:

VOWEL SOUNDS AND SPELLINGS:	CONSONANT SOUNDS AND SPELLINGS:	CAPITAL LETTERS:
<i>/i/</i> as in <i>sk<u>i</u>m</i>	<i>/m/</i> as in <i>ri<u>m</u></i>	C, F, I, J, K, M, P, S, T, V
<i>/e/</i> as in <i>be<u>d</u></i>	<i>/t/</i> as in <i>go<u>t</u></i>	
<i>/a/</i> as in <i>ta<u>p</u></i>	<i>/d/</i> as in <i>di<u>p</u></i>	
<i>/u/</i> as in <i>u<u>p</u></i>	<i>/k/</i> as in <i>co<u>t</u>, ki<u>d</u></i>	OTHER:
<i>/o/</i> as in <i>flo<u>p</u></i>	<i>/g/</i> as in <i>lo<u>g</u></i>	<hr/>
	<i>/n/</i> as in <i>pe<u>n</u></i>	• Four- and five-letter words
	<i>/h/</i> as in <i>ha<u>m</u></i>	• 's (for possession)
	<i>/s/</i> as in <i>si<u>t</u></i>	• 't (contraction)
	<i>/f/</i> as in <i>fa<u>t</u></i>	• Punctuation (period, comma, exclamation point)
	<i>/v/</i> as in <i>ve<u>t</u></i>	
	<i>/z/</i> as in <i>zi<u>p</u></i>	TRICKY WORDS:
	<i>/p/</i> as in <i>ti<u>p</u></i>	<hr/>
	<i>/b/</i> as in <i>bu<u>s</u></i>	a, are, blue, I, little, look, one, the, three, two, yellow
	<i>/l/</i> as in <i>la<u>mp</u></i>	
	<i>/r/</i> as in <i>ri<u>p</u></i>	
	<i>/w/</i> as in <i>we<u>t</u></i>	
	<i>/j/</i> as in <i>jo<u>g</u></i>	
	<i>/y/</i> as in <i>ye<u>s</u></i>	
	<i>/x/</i> as in <i>bo<u>x</u></i>	
	consonant clusters	

Code Knowledge added gradually in the unit for this Reader:

- Beginning with "Seth": */th/* as in *thin*; */th/* as in *this*
- Beginning with "Seth's Mom": */ng/* as in *ring*
- Beginning with "Seth's Dad": */ch/* as in *chin*; */sh/* as in *shop*; Capital Letter 'D'
- Beginning with "Sal's Fish Shop": */qu/* as in *quit*
- Beginning with "Lunch": Capital Letter 'L'

Credits

Every effort has been taken to trace and acknowledge copyrights. The editors tender their apologies for any accidental infringement where copyright has proved untraceable. They would be pleased to insert the appropriate acknowledgment in any subsequent edition of this publication. Trademarks and trade names are shown in this publication for illustrative purposes only and are the property of their respective owners. The references to trademarks and trade names given herein do not affect their validity.

All photographs are used under license from Shutterstock, Inc. unless otherwise noted.

Writers

Matt Davis, Erin Kist, Juliane K. Munson,
Rachel E. Wright

Illustrators and Image Sources

All illustrations by Raghav Arumugan,
colored by Nicole Stahl



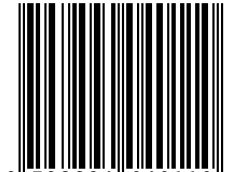
 **Amplify** ELAR
TEXAS

Kindergarten | **Skills 7** | Reader

Seth

450L

ISBN 9798894040110



9 798894 040110