

1

Kindergarten

Skills 1 | Digital Components

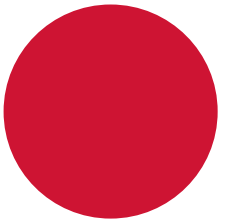
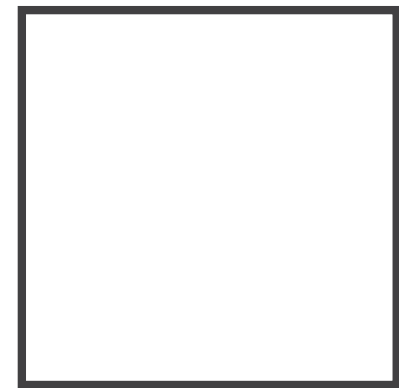
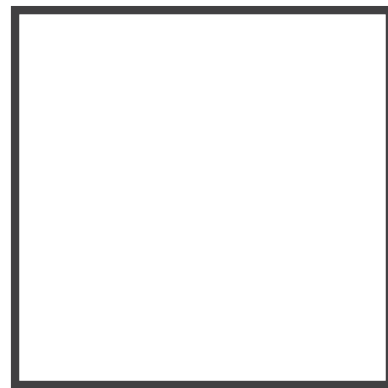
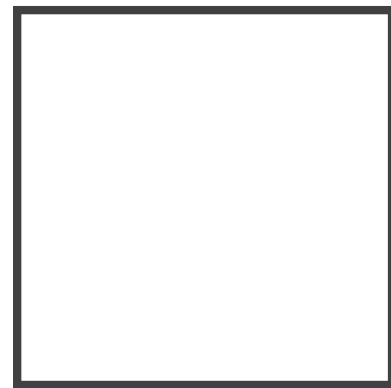
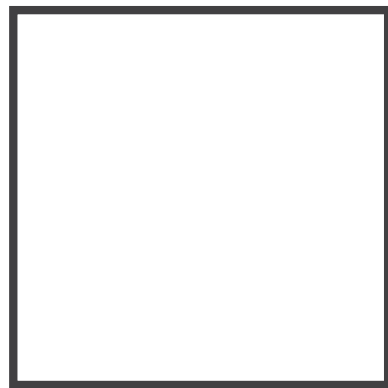
Kindergarten

Skills 1

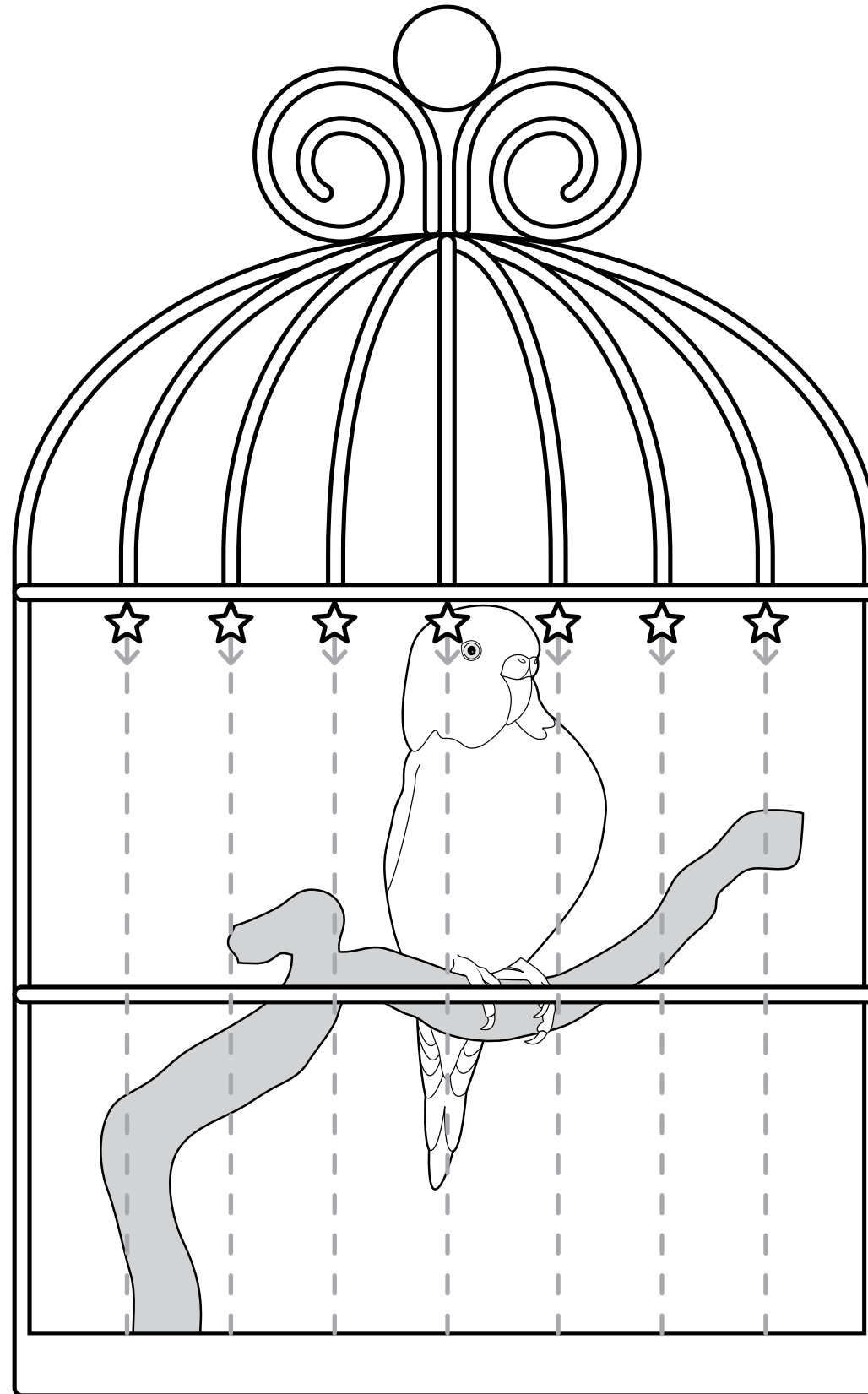
Digital Components

Table of Contents

Digital Component 3.1	1
Digital Component 3.2	2
Digital Component 4.1	3
Digital Component 6.1	4
Digital Component 7.1.	5
Digital Component 8.1	6
Digital Component 9.1	7
Digital Component 9.2	8



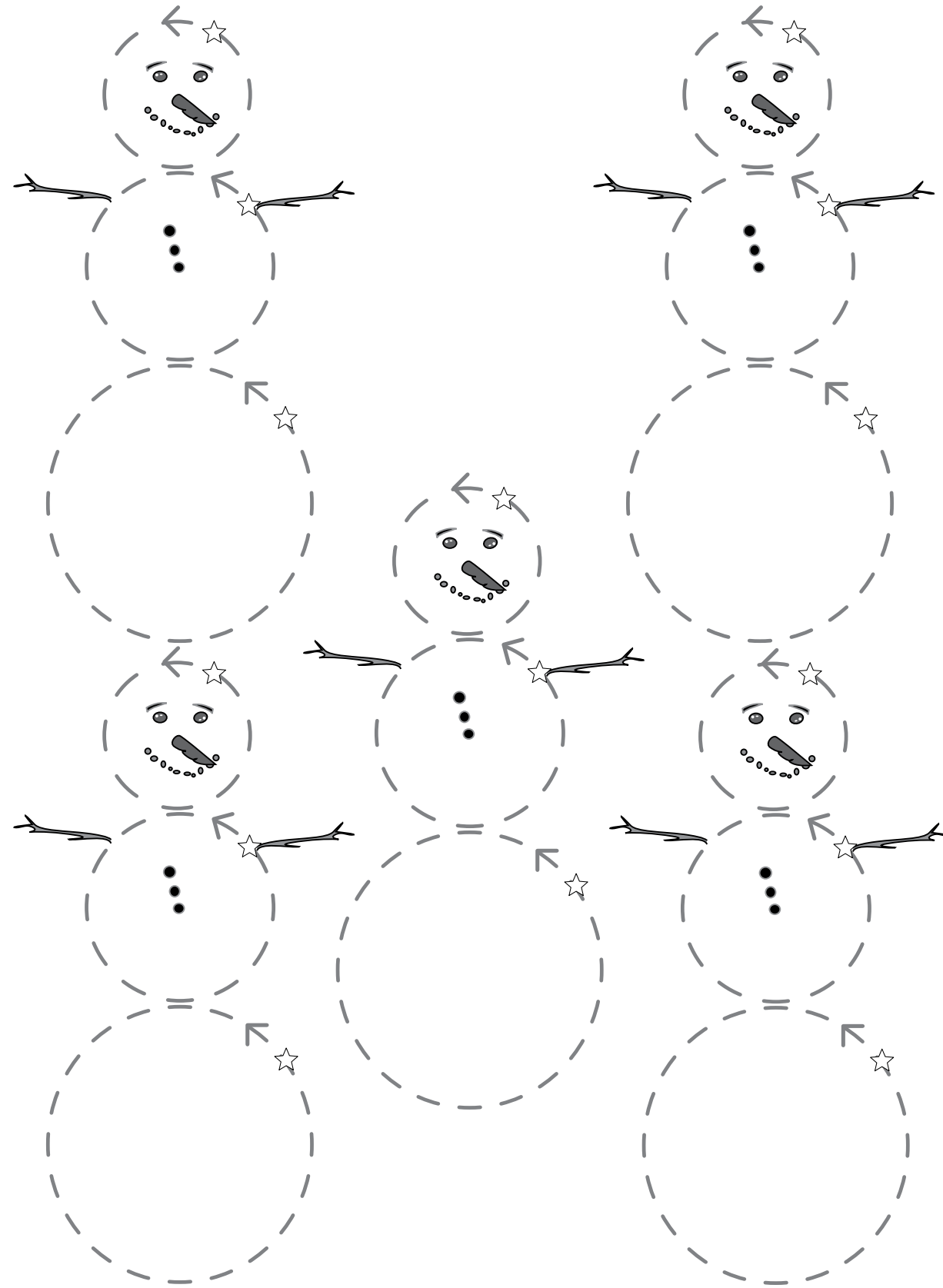
Directions: Have students trace the dotted vertical lines, starting at the stars and moving down. (There are more on the back.) Students may color the picture (optional).



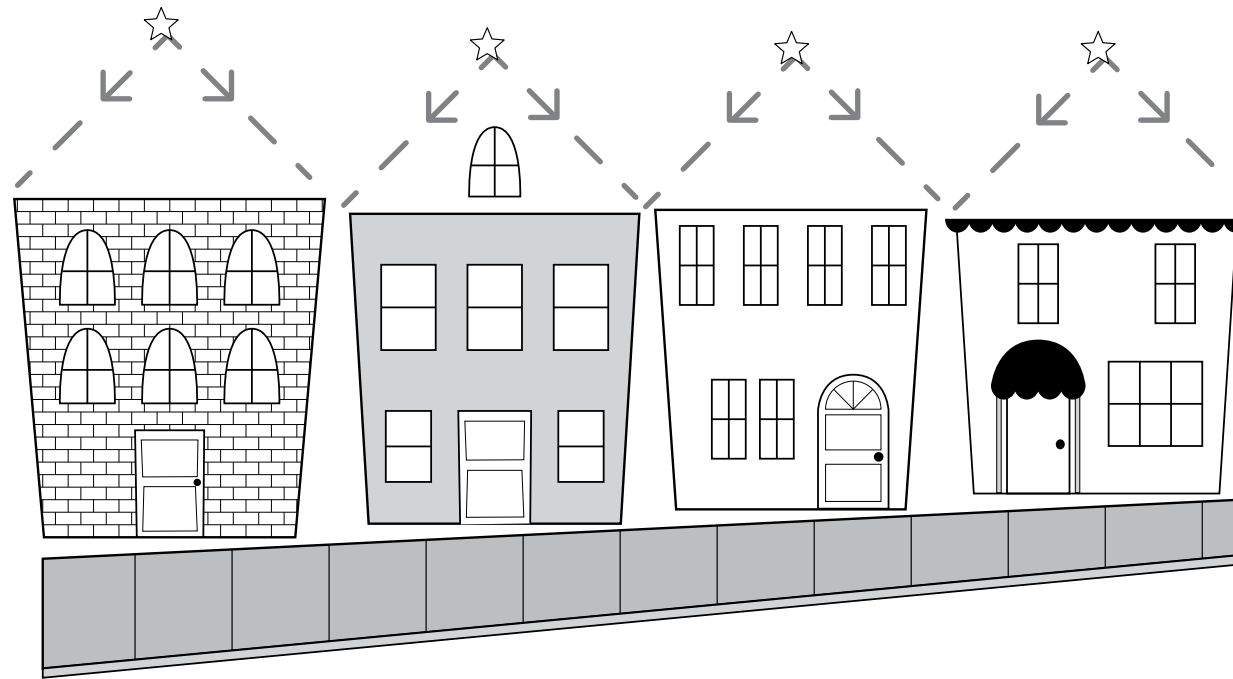
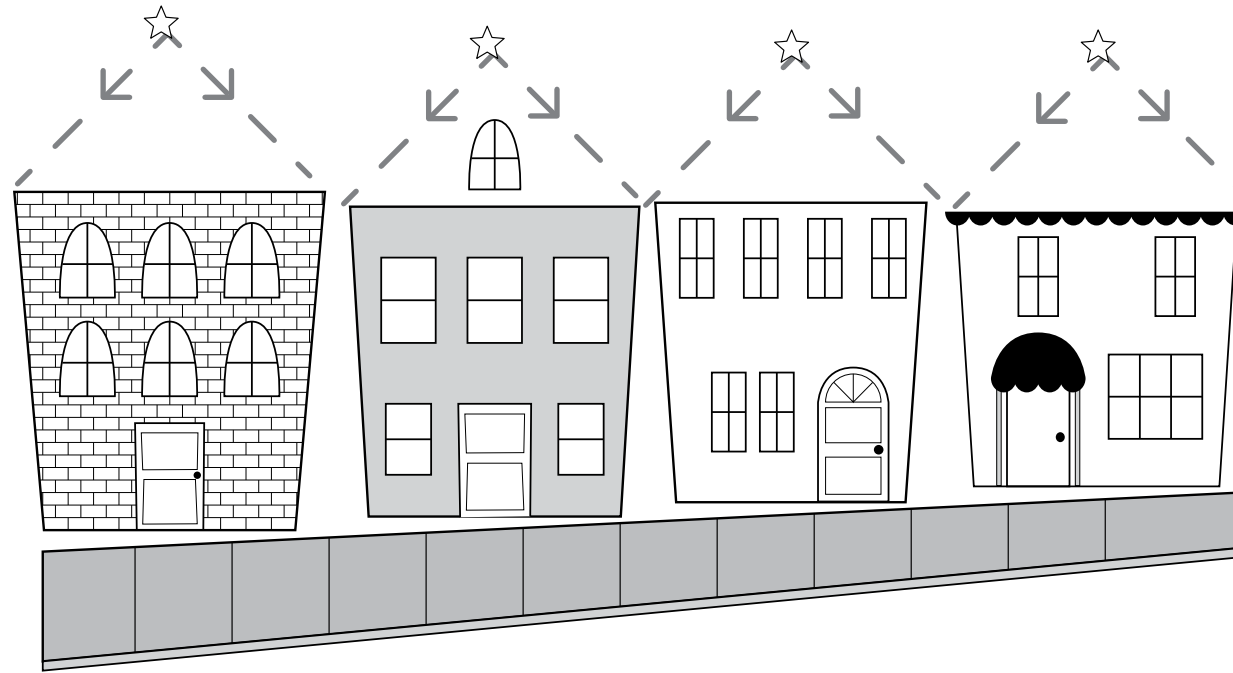
Directions: Have students trace the dotted horizontal lines, starting at the stars and moving to the right. (There are more on the back.) Students may color the pictures (optional).



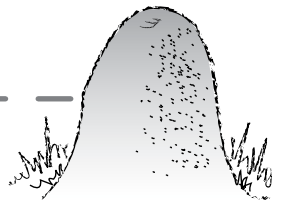
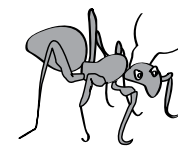
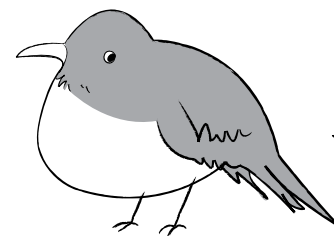
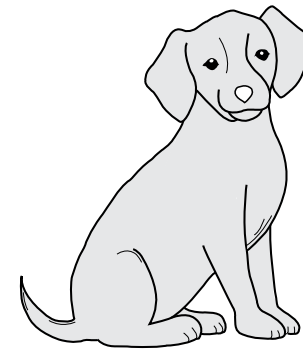
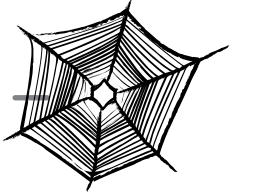
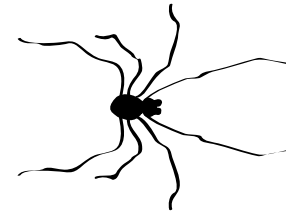
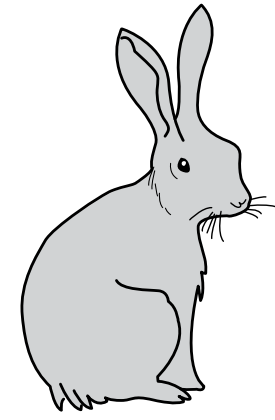
Directions: Ask students to trace the dotted circles, starting at the stars and moving to the left. Students may color the pictures (optional).



Directions: Ask students to trace the dotted lines, starting at the stars. Students may color the pictures (optional).

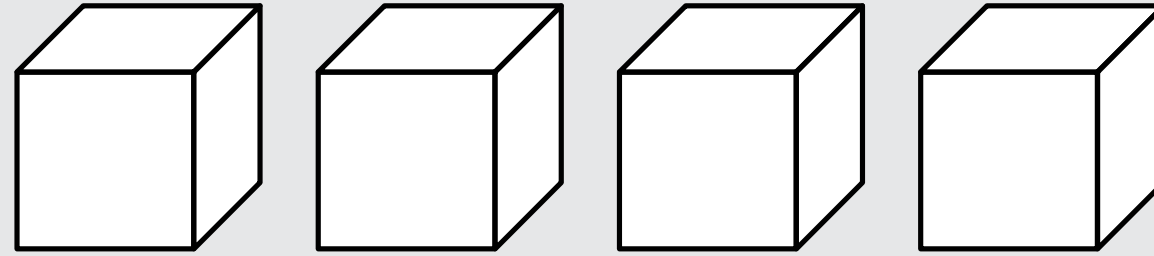


Directions: Ask students to trace the dotted lines, starting at the stars and moving down on the front of the activity page and moving to the right on the back of the activity page. Students may color the pictures (optional).

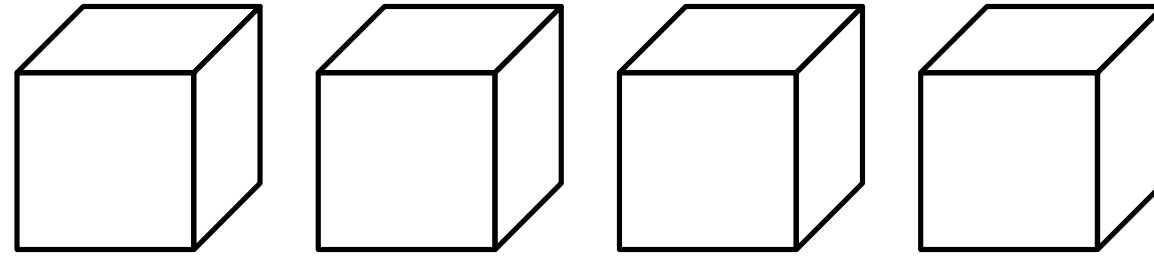


Directions: For each sentence, ask students to circle one cube for each word in the sentence read aloud.

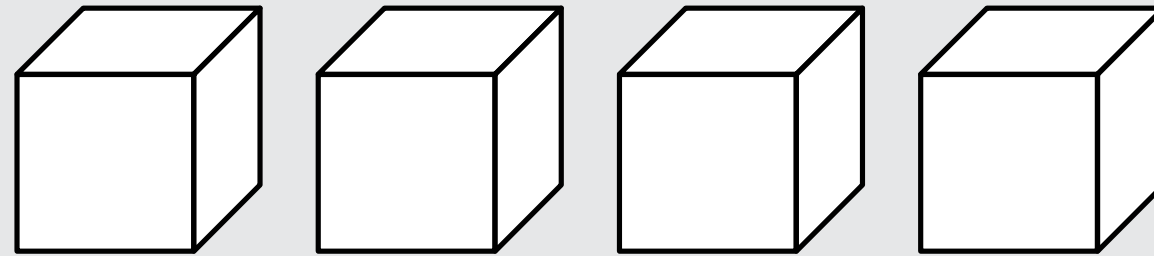
1.



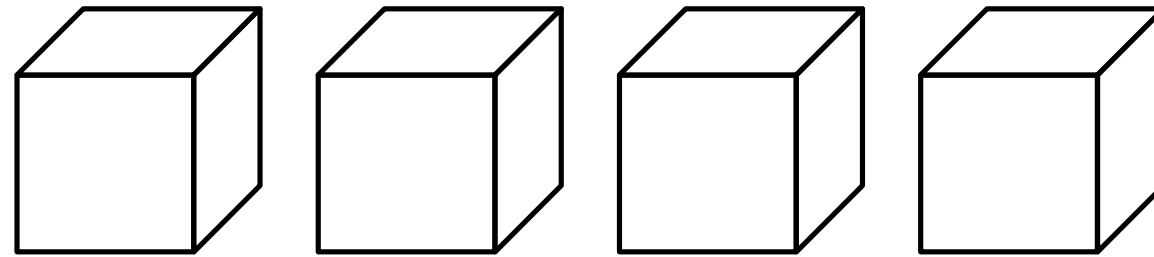
2.



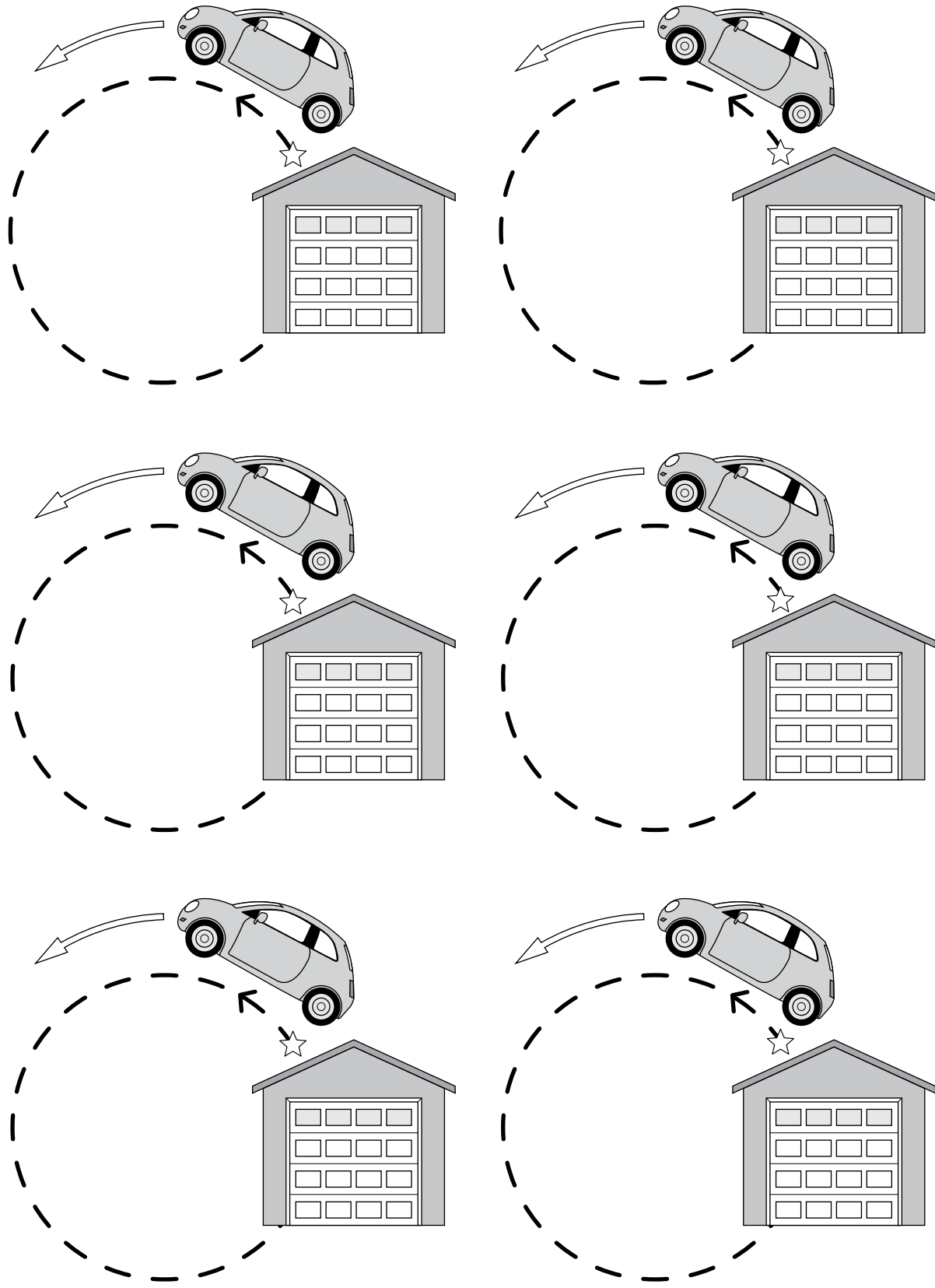
3.



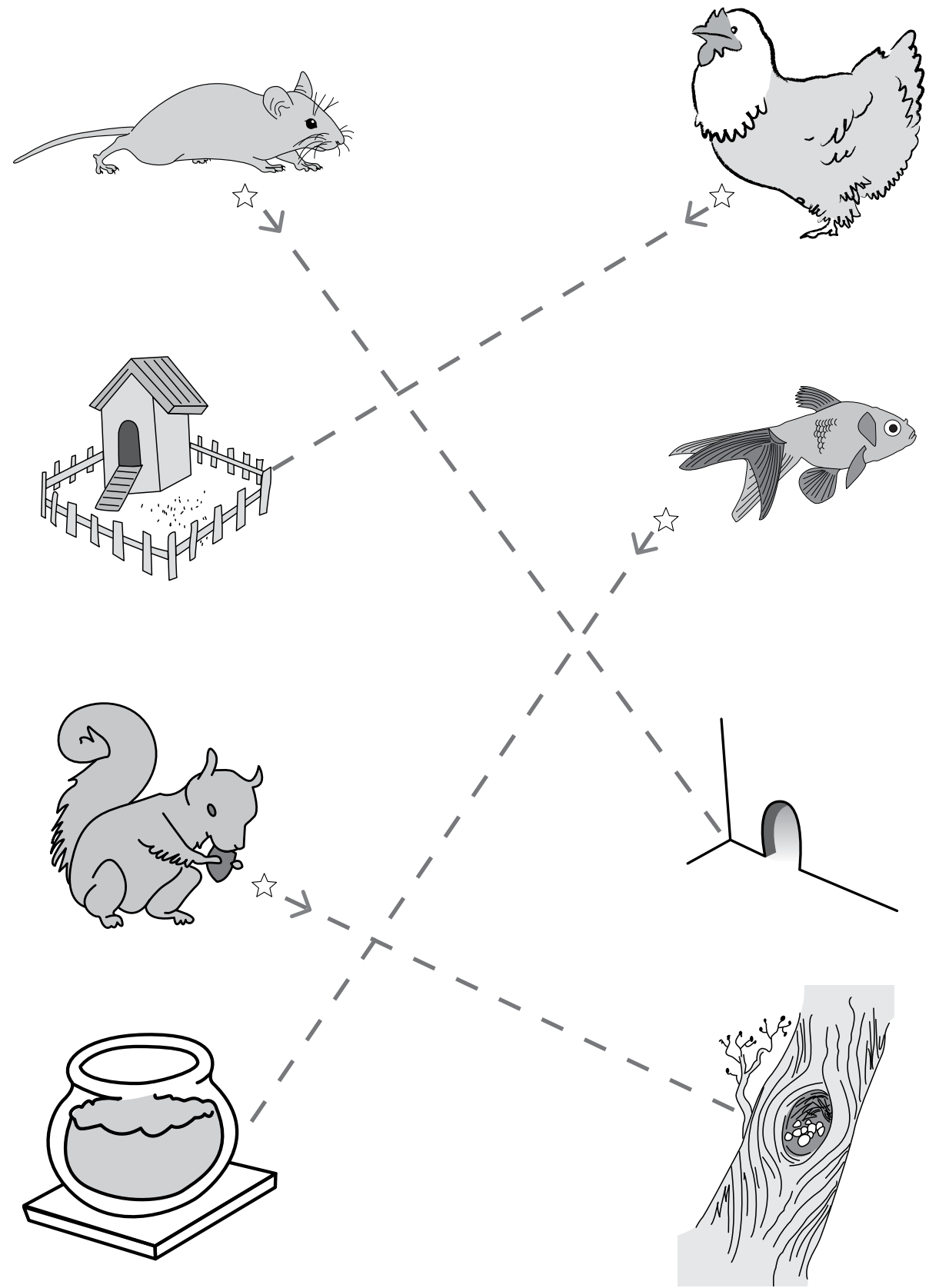
4.



Directions: Ask students to trace the dotted circles, starting at the stars and moving to the left. Students may color the pictures (optional).



Directions: Ask students to trace the dotted lines, starting at the stars. Students may color the pictures (optional).



Notice and Disclaimer: The agency has developed these learning resources as a contingency option for school districts. These are optional resources intended to assist in the delivery of instructional materials in this time of public health crisis. Feedback will be gathered from educators and organizations across the state and will inform the continuous improvement of subsequent units and editions. School districts and charter schools retain the responsibility to educate their students and should consult with their legal counsel regarding compliance with applicable legal and constitutional requirements and prohibitions.

Given the timeline for development, errors are to be expected. If you find an error, please email us at texashomelearning@tea.texas.gov.

This work is licensed under a Creative Commons Attribution-NonCommercial-ShareAlike 4.0 International License.

You are free:
to Share—to copy, distribute, and transmit the work
to Remix—to adapt the work

Under the following conditions:

Attribution—You must attribute any adaptations of the work in the following manner:

This work is based on original works of Amplify Education, Inc. (amplify.com) and the Core Knowledge Foundation (coreknowledge.org) made available under a Creative Commons Attribution-NonCommercial-ShareAlike 4.0 International License. This does not in any way imply endorsement by those authors of this work.

Noncommercial—You may not use this work for commercial purposes.

Share Alike—If you alter, transform, or build upon this work, you may distribute the resulting work only under the same or similar license to this one.

With the understanding that:

For any reuse or distribution, you must make clear to others the license terms of this work. The best way to do this is with a link to this web page:

<https://creativecommons.org/licenses/by-nc-sa/4.0/>

© 2020 Amplify Education, Inc.
amplify.com

Trademarks and trade names are shown in this book strictly for illustrative and educational purposes and are the property of their respective owners. References herein should not be regarded as affecting the validity of said trademarks and trade names.

Credits

Every effort has been taken to trace and acknowledge copyrights. The editors tender their apologies for any accidental infringement where copyright has proved untraceable. They would be pleased to insert the appropriate acknowledgment in any subsequent edition of this publication. Trademarks and trade names are shown in this publication for illustrative purposes only and are the property of their respective owners. The references to trademarks and trade names given herein do not affect their validity.

All photographs are used under license from Shutterstock, Inc. unless otherwise noted.

Illustrators and Image Sources

2: Staff; 3: Staff; 4: Staff; 5: Staff; 6: Staff; 8: Staff

Regarding the Shutterstock items listed above, please note: "No person or entity shall falsely represent, expressly or by way of reasonable implication, that the content herein was created by that person or entity, or any person other than the copyright holder(s) of that content."

